
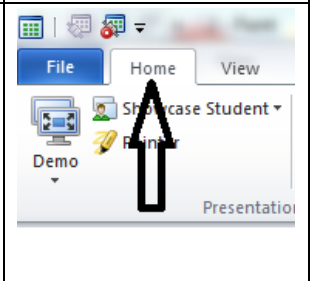
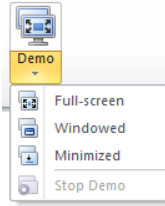






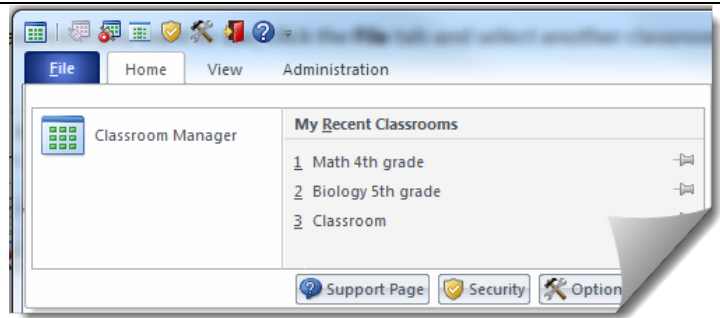
<p>When you start your teacher computer Vision automatically connects to your default overview of what each student is working on and enables you to select one or more computers to start using the teaching features. Alternatively, you may click the Vision link found on your desktop</p>	
<p>By clicking on the Home tab, you will see all the connected computers and what is currently displayed on its screen</p>	

MOST FREQUENTLY USED TEACHING FEATURES

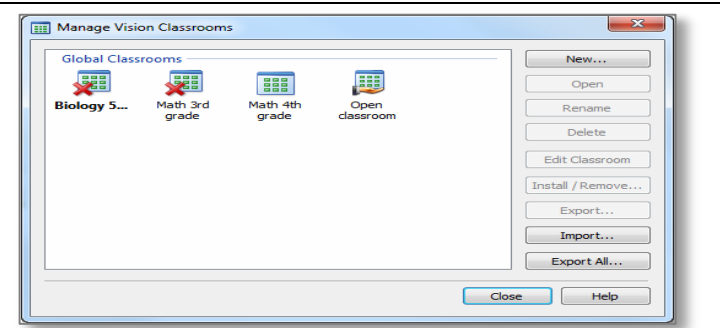
	<p>Full-screen: Focus the attention of the class. Lock student computers' keyboard and mouse.</p> <p>Windowed: Allow student to work while you demonstrate.</p> <p>Minimize: Students can access your demonstration from the taskbar.</p>
	<p>Blank Screen: Get your students' attention by disabling mouse and keyboard while showing a standard picture on their screens.</p>
	<p>Live View: See what an individual student is working on by opening a large, real-time view of his or her screen</p>
	<p>Lock Web: Block access to the Internet on student computers</p>
	<p>Remote Control: Help an individual student by controlling his or her computer remotely – just like you were actually sitting in front of the computer.</p>


Vision will always connect to the default classroom, and remember classrooms you have recently used so startup is very quick and you will be ready to use Vision in no time at all:

Vision will always connect to the default classroom, and remember classrooms you have recently used so startup is very quick and you will be ready to use Vision in no time at all:



And if the classroom you want is not in the list of the ones that have been used recently, click **Classroom Manager** to see all classrooms:



- Tips:**
- 📌 One classroom is always the default one, the one in bold.
 - 📌 In the **Manage Vision Classrooms** dialog box, right-click a classroom and select **Set as Default Classroom** to change which classroom connects automatically.
 - 📌 Only one classroom can be connected at a time, the one with the normal connect icon: 

A SELECTION OF OTHER USEFUL TEACHING FEATURES

Perspective: Change the way you view classroom computers, one computer at a time shows in large size.

Chat: Chat with a single student to help him or her without interrupting the whole class. Or chat with a group or with all students to get their feedback.

Shortcut Bar: View the shortcut bar to the right, customize it and move it to the top of the screen as you see fit. The shortcut bar is especially useful when you use full-screen demo because it can stay on top.

